

Emprint™

SpotDot™



The World's Only Braille and Color Ink Embosser

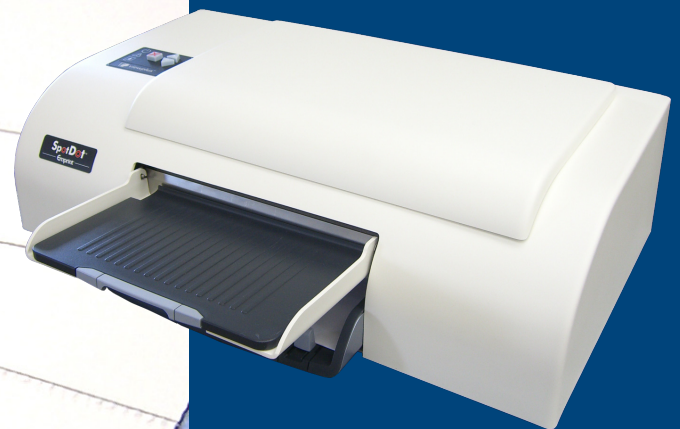
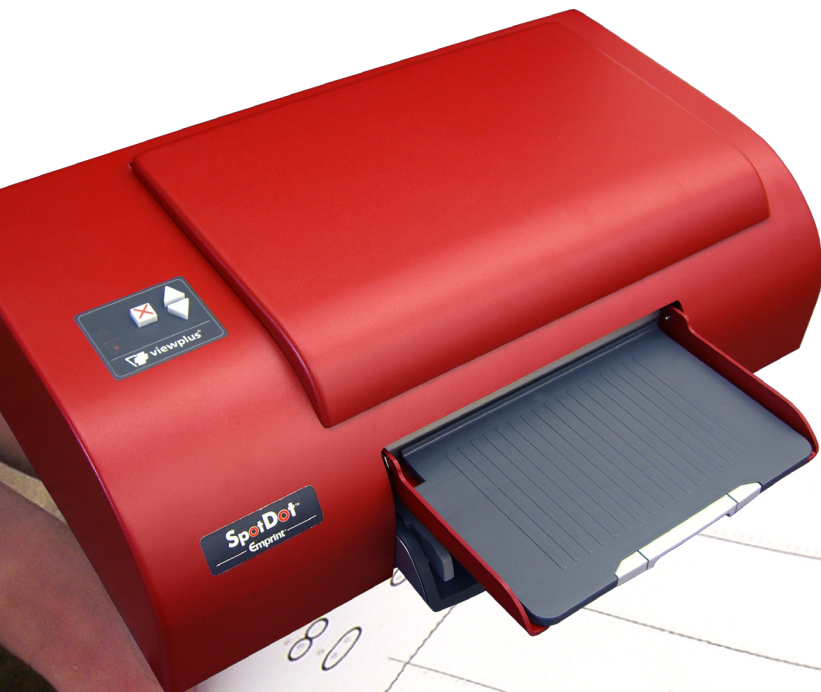
- Prints braille and ink on the same page
- Formats Word and Excel documents for braille automatically
- Creates raised visual images on paper from anything on the computer screen
- Includes Tiger Designer—tactile graphics design software for Windows
- Employs Tiger technology—the new standard in embossed tactile graphics
- Uses the same paper and ink cartridges as an HP Inkjet printer

Emprint SpotDot Fire (Red) \$ 6,995*
Emprint SpotDot Ice (White) \$ 6,995*

Printing Speed: Emboss only: 50 characters/sec
Ink and Emboss: 40 characters/sec
Paper Width: 4 in. to 9 in.

ViewPlus Technologies Inc.
1853 SW Airport Ave. Corvallis OR U.S.A. 97333
phone: 541 754 4002 (toll free: 866 836 2184)
email: sales@viewplus.com
www.viewplus.com

*Purchase includes a license of Tiger Software Suite



+Ink

SpotDot = Tiger Braille + Ink

Emprint™

Specifications:

Print speed:

- 50 CPS emboss only
- 40 CPS ink & emboss

Ink printing resolution: 300 dpi

Ink print quality: best, normal, draft

Emboss printing resolution: 20 dpi

Embossed braille dots: heavy, normal, light

Embossed 3D dots:

8 grades including Braille dot height

Replacement cartridges:

- C6656A Hewlett Packard Type 56 black
- C6657A Hewlett Packard Type 57 tri-color

Paper Sizes:

8.5 x 11 in, 8 x 11 in, 8 x 13 in, A4, A5, B5,
195 x 270 mm

Paper Weights:

Letter: 20 to 28 lb (75 to 105 g/m²)
Envelopes: 20 to 24 lb (75 to 90 g/m²)
Banner: 16 to 24 lb (50 to 90 g/m²)
Card Stock: up to 110lb (200 g/m²)
Photo Paper: up to 130 lb (230 g/m²)

Paper handling:

150 sheet input tray (copy paper),
60 sheet input tray (braille paper or card
stock), up to 20 envelopes, labels or banners

Connectivity: 1 USB (1.1, 2.0)

Compatibility:

Windows Vista, XP, 2000

Dimensions:

H 170 x W 596 x D 427 mm
H 6.7 x W 23.4 x D 16.8 in.

Weight: 11 kg (24.4 lb)

Operating environment:

- recommended operating room:
59 to 95 °F (15 to 35 °C)
- Storage temperature: -4 to -158 °F (-40 to 70 °C)
- Recommended humidity range: 20 to 80% RH

Power requirements:

100 - 240 VAC (+/- 10%), 50/60 Hz (+/- 3%)

Power consumption:

- Stand-by 21 Watts
- Average ink printing 26 Watts
- Average embossing 64 Watts
- Heavy embossing 110 Watts

Haptic Color Printing

Studies in neurophysiology tell us that physical experience creates especially strong neural pathways in the brain. Beyond vision alone, using the haptic (touch) sensory modality engages the two hemispheres of the brain simultaneously—assuring we retain information in long-term memory.

The haptic modality is the most active and interactive of all the senses, and unlike the visual or auditory modalities, it is bi-directional. Everyone learns better through haptic interaction with materials.

People with learning disabilities are often limited to a single learning style and have great difficulty processing new concepts without tactile/kinesthetic activities. In certain cases, children cannot learn to count without touching the objects they are counting. Blind people also need haptic prints to have any access to graphic information at all.

Printing with Haptic Color assures that everyone can make use of the materials you create.



Create interactive tactile graphics with audio feedback using the Emprint SpotDot with the IVEO audio tactile touchpad. Combining all three learning modalities (audio, visual, and tactile) for greater learning comprehension.



The image shows a person's hand touching a large, flat, black touchpad. The touchpad displays a map of Europe. A speech bubble with a speaker icon and the text "France" is positioned over the map. In the background, a red printer is visible on a desk. Another touchpad is shown in the foreground, displaying a diagram of the germination process with five steps labeled Step 1 through Step 5. The diagram includes a sun, clouds, and a seedling growing from a seed.